

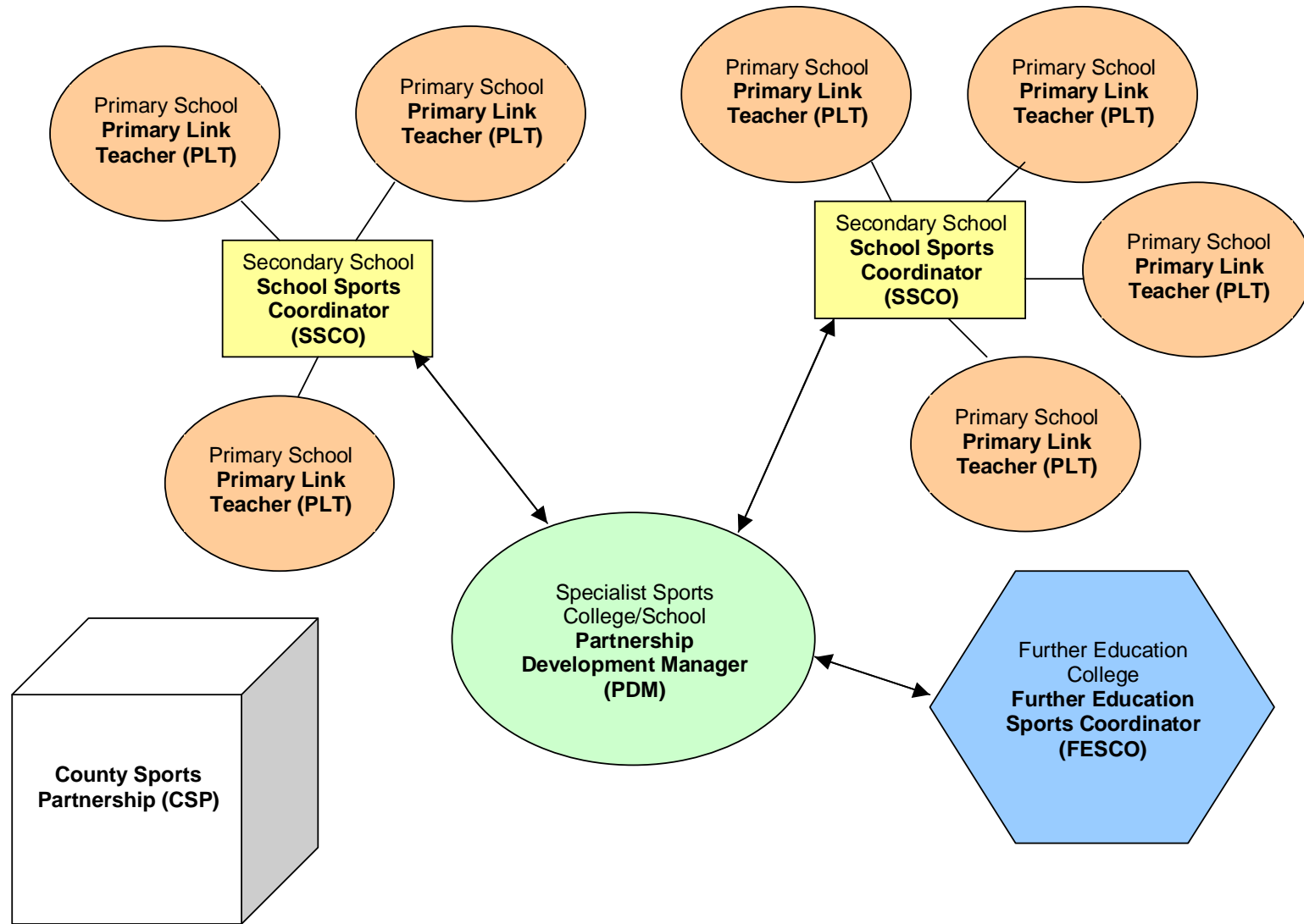
# *School Sports Partnerships* *and* *County Sports Partnerships*



## Contents Page

	<b>Page Numbers</b>
<b>School Sports Partnership and County Sports Partnership Structure Explained</b>	<b>2</b>
<b>School Sports Partnership (SSP)</b>	<b>3</b>
<b>Southern Region School Sports Partnership Contact Details</b>	<b>4 – 5</b>
<b>County Sports Partnerships</b>	<b>6</b>
<b>Southern Region County Sports Partnerships Contact Details</b>	<b>7</b>
<b>Competition Managers</b>	<b>8</b>
<b>Southern Region Competition Managers Contact Details</b>	<b>9</b>
<b>British Schools Gymnastics Association (B.S.G.A)</b>	<b>10</b>
<b>Southern Region B.S.G.A Contact Details</b>	<b>11</b>

**School Sports Partnership (SSP) and County Sports Partnership (CSP) Structure Explained**



## School Sports Partnerships

There are 36 School Sports Partnerships (SSP) in the Southern Region

**8 SSPs in Berkshire**  
**8 SSPs in Buckinghamshire**  
**15 SSPs in Hampshire**  
**5 SSPs in Oxfordshire**

School Sport Partnerships (SSPs) are groups of schools working together to develop PE and sport opportunities for all young people.

A School Sports Partnership comprises:

- 1 Specialist Sports College, known as the hub of the partnership.
- A number of Family Secondary Schools (the exact number varies from partnership to partnership)
- A number of Primary Schools that are linked to their Family Secondary School (the exact number varies from partnership to partnership)

At the Specialist Sports College sits a **Partnership Development Manager (PDM)**. Their role is to manage the development of the partnership and the links with other PE and sport organisations.

At the Family Secondary School sits a **School Sports Coordinator (SSCO)** and their role is to concentrate on improving school sport opportunities, including out of hours school learning, intra and inter-school competition and club links, across a family of schools.

At the Primary School sits a **Primary Link Teacher (PLT)**. Their aim is to improve the quantity and quality of PE and sport in their own schools.

A new role within SSPs are the **Further Education Sports Coordinator (FESCO)**. They typically sit within a further education establishment and work to design, develop and implement college based sport enrichment programmes for students aged between 16 and 19. They also look to support, train, develop and deploy sports leaders, volunteers and officials aged between 16 and 19, through existing programmes such as Step into Sport.

## Southern Region School Sports Partnerships

Partnership Name	Host Organisation	Address 1	Town/City	County	Switchboard	PDM Name
Park House	Park House School and Sports College	Andover Road	Newbury	<b>Berkshire</b>	01635 573911	James Mandry
Charters	Charters School	Charters Road	Ascot	<b>Berkshire</b>	01344 624826	Emma Fitzgerald Emma Seymour / Sue Isaac
Reading LEA	Reading School Improvement Centre	Dunsfold Road	Reading	<b>Berkshire</b>	0118 9390900	
Bracknell Forest/Brakenhale	Brakenhale School	Rectory Lane	Bracknell	<b>Berkshire</b>	01344 423 041	Matt Gamble
Bulmershe	Bulmershe School	Chequers Way	Reading	<b>Berkshire</b>	0118 935 3353	Lisa McGuigan
Windsor Boys and Girls	Windsor Boys School	1 Maidenhead Road	Windsor	<b>Berkshire</b>	01753 716060	Joanne Pappenheim
Wexham	Wexham School	Norway Drive	Slough	<b>Berkshire</b>	01753 526797	Nadean Withers
Theale Green	Theale Green Community School	Theale	Reading	<b>Berkshire</b>	0118 9302741	Maxine Cooke
Dr Challoners	Dr Challoners High School	Cokes Lane	Amersham	<b>Buckinghamshire</b>	01494 763296	Sue Formby
Mandeville	Mandeville Upper School	Ellen Road	Aylesbury	<b>Buckinghamshire</b>	01296 424472	Katy Kelly
Wye Valley	Wye Valley School	New Road	Bourne End	<b>Buckinghamshire</b>	01628 819 022	Sally Mapley
Burnham Upper	Burnham Upper School	Opendale Road	Burnham	<b>Buckinghamshire</b>	01628 662 107	Merle Forbes
Buckingham	Buckingham School	London Road	Buckingham	<b>Buckinghamshire</b>	01280 812 206	Emma Nulty
Radcliffe	Radcliffe School	Aylesbury Street West	Milton Keynes	<b>Buckinghamshire</b>	01908 312579	Amber Ollier
Leon	Leon School and Sports College	Fern Grove	Milton Keynes	<b>Buckinghamshire</b>	01908 624720	Nina Sweetland
Sir William Borlase	Sir William Borlase Grammar School	West Street	Marlow	<b>Buckinghamshire</b>	01628 816500	Pam Munday

Partnership Name	Host Organisation	Address 1	Town/City	County	Switchboard	PDM Name
Wavell	Wavell School	Lynchford Road	Farnborough	Hampshire	01252 341720	Richard Francis
Bridgemary	Bridgemary Community Sports College	Wych Lane	Gosport	Hampshire	01329 319966	Michael Ball
Brighton Hill	Brighton Hill Community College	Brighton Way	Basingstoke	Hampshire	01256 362520	Shaun Gillam
Hamble Community	Hamble Community Sports College	Satchell Lane	Southampton	Hampshire	02380 452105	Mandy Quill
Perins	Perins Community School	Pound Hill	Alresford	Hampshire	01962 737254	Gary Timson
Henry Cort	Henry Cort Community College	Hillson Drive	Fareham	Hampshire	01329 843127	Matt Lane
Toynbee	Toynbee Sports College	Bodycoats Road	Eastleigh	Hampshire	02380 269026	Lisa Binney
Bitterne Park	Bitterne Park School	1 Copsewood Road	Southampton	Hampshire	02380 294142	Julia Tucker-Blackford
Testwood	Testwood Sports College	Testwood Lane	Southampton	Hampshire	02380 665483	Nick Ainsworth
Priory	Priory School (Specialist Sports College)	Fawcett Road	Southsea	Hampshire	02392 819115	Madeleine Campbell
Staunton Park	Staunton Park Community School	Wakefords Way	Havant	Hampshire	02392 473031	Layla Kent
Redbridge Community	Redbridge Community School	Cuckmere Lane	Southampton	Hampshire	02380 764218	Pam Noel
Mountbatten	Mountbatten School	Whitenap Lane	Romsey	Hampshire	01794 502502	Patrick Salmon
Sandown	Sandown High School	The Fairway	Sandown	Isle of Wight	01983 402142	Andrew Day
Carisbrook	Carrisbrooke High School	Mountbatten Drive	Newport	Isle of Wight	01983 550025	Yvonne Hicks
Lord Williams	Lord Williams School	Oxford Road	Thame	Oxfordshire	01844 210510	Margaret Stevens
Blessed George Napier	Blessed George Napier School	Addison Road	Banbury	Oxfordshire	01295 264216	Carl Hamilton
Chipping Norton	Chipping Norton School	Burford Road	Chipping Norton	Oxfordshire	01608 642 007	Claire Wallace
Wallingford	Wallingford School	St Georges Road	Wallingford	Oxfordshire	01491 837115	Matthew Bunston
King Alfreds (Oxfordshire)	King Alfreds Community & Sports College	West Site	Wantage	Oxfordshire	01235 225700	Carolyn Murphy

## **County Sports Partnerships**

There are 4 County Sports Partnerships (CSP) in the Southern Region

***1 CSPs in Berkshire  
1 CSPs in Buckinghamshire  
1 CSPs in Hampshire  
1 CSPs in Oxfordshire***

County Sport Partnerships (CSPs) are groups of local partners working together to develop sport opportunities for people of all ages and backgrounds, committed to providing a high quality single system for people to benefit from sport.

### Involved in a County Sports Partnership:

- Local Authorities and School Sports Partnerships
- National Governing Bodies of Sport and County Associations
- Sport England and a Support Team to aid development

### A CSP has the following characteristics:

- It maintains a focus on children and young people (Physical Literacy, Long Term Athlete Development and child welfare)
- It is underpinned by a commitment to equity
- It seeks to ensure that sports development is driven through NGB plans
- Action is based on local need - influencing the understanding, interpretation and deployment of national, regional and local policy
- It is focused on investing in, and valuing people
- It is committed to achieving quality standards through continuous improvement and excellence in order to demonstrate impact
- It is fundamentally independent so that the core partnership team is impartial in order to broker progress

### A CSP has the following key work areas:

Pathways for Young People, Workforce Development, Club Development and Supporting the Wider Agenda

## Southern Region County Sports Partnerships

Partnership Name	Address	Phone	Email	Web
Berkshire County Sports Partnership 	2 – 4 Darwin Close, Reading, Berkshire, RG2 0TB	01183 766136	<a href="mailto:Debbie.griffiths@reading.gov.uk">Debbie.griffiths@reading.gov.uk</a>	<a href="http://www.berkshiresport.com">www.berkshiresport.com</a>
Buckinghamshire County Sports Partnership 	Leisure Services, AVDC, 66 High Street, Aylesbury, Bucks, HP20 1SD	01296 585215	<a href="mailto:info@buckssport.org">info@buckssport.org</a>	<a href="http://www.buckssport.org">www.buckssport.org</a>
Hampshire and IOW County Sports Partnership 	Mottisfont Court, High Street, Winchester, Hants, SO23 8ZF	01962 845019	<a href="mailto:sporthampshireiow@hants.gov.uk">sporthampshireiow@hants.gov.uk</a>	<a href="http://www.sporthampshireiow.co.uk">www.sporthampshireiow.co.uk</a>
Oxfordshire County Sports Partnership 	Oxfordshire Sports Partnership Core Team, Headington Library, Bury Knowle Park, North Place, Headington, OX3 9HY	01865 467239	<a href="mailto:info@oxfordshiresport.org">info@oxfordshiresport.org</a>	<a href="http://www.oxfordshiresport.org">www.oxfordshiresport.org</a>

## **Competition Managers**

***4 CMs in Berkshire***  
***4 CMs in Buckinghamshire***  
***8 CMs in Hampshire***  
***3 CMs in Oxfordshire***

A competition manager's job is to provide more structured and increased opportunities for young people to take part in competitive sport and to ensure that school-based opportunities are integrated with competitions provided by both clubs and the National Governing Bodies.

Their overall role will be to manage and co-ordinate the planning and implementation of the National Schools Competition Framework through a programme of inter-school competition within the School Sport Partnership.

They will be complementing and developing existing provision (where it is good practice); and ensure that the competition programme is linked with the equivalent programs delivered by other School Sport Partnerships within the CSP and/or local area.

They will also liaise with the County Sports Partnership, National Governing Bodies at county and regional level and the local School Sports Partnerships to ensure that the programme also fits into the wider context.

## Southern Region Competition Managers

County	Name	SSP	Email	Phone
<b>Berkshire</b>	Tim Dancer	Senior Competition Manger	<a href="mailto:Tim.dancer@reading.gov.uk">Tim.dancer@reading.gov.uk</a>	01183 766129
	Samantha Ward	Bracknell & Bulmershe	<a href="mailto:Samantha.ward@reading.gov.uk">Samantha.ward@reading.gov.uk</a>	01183 766128
	Laura Goodall	Charter, Wexham & Windsor	<a href="mailto:Laura.goodall@reading.gov.uk">Laura.goodall@reading.gov.uk</a>	01183 766131
	Tom Blindell	West Berks (East & West) & Reading	<a href="mailto:Tom.blindell@reading.gov.uk">Tom.blindell@reading.gov.uk</a>	01183 766134
<b>Buckinghamshire</b>	Emily Clarke	Senior Competition Manager	<a href="mailto:eclarke@buckssport.org">eclarke@buckssport.org</a>	07968377553
	Alex Smith	Aylesbury Vale	<a href="mailto:asmith@buckssport.org">asmith@buckssport.org</a>	
	Andy Cavill	South Bucks	<a href="mailto:acavill@buckssport.org">acavill@buckssport.org</a>	
	Mark Patmore	Milton Keynes	<a href="mailto:mpatmore@buckssport.org">mpatmore@buckssport.org</a>	
<b>Hampshire and IOW</b>	Jemma Green	Southampton	<a href="mailto:Jemma.green@redbridge.southampton.sch.uk">Jemma.green@redbridge.southampton.sch.uk</a>	02380 764218
	Robert Cook	New Forest & Testwood	<a href="mailto:Robert.cook@mountbatten.hants.sch.uk">Robert.cook@mountbatten.hants.sch.uk</a>	01794 502502
	Gareth Evans	Basingstoke & Deane	<a href="mailto:gevens@brightonhill.hants.sch.uk">gevens@brightonhill.hants.sch.uk</a>	01256 362522
	Helen Burdett	Carisbrooke & Sandown	<a href="mailto:Helen.Burdett@sandownhighschool.com">Helen.Burdett@sandownhighschool.com</a>	01983 402142
	Gareth Byres	Perins & North East Hants	<a href="mailto:Gareth.byres@samuelcody.hants.sch.uk">Gareth.byres@samuelcody.hants.sch.uk</a>	01252 314720
	Scott Sivier	Fareham & Gosport	<a href="mailto:s.sivier@bridgemary.hants.sch.uk">s.sivier@bridgemary.hants.sch.uk</a>	01329 319966
	Jo Cridland	Toynbee & Hamble	<a href="mailto:j.cridland@toynbee.hants.sch.uk">j.cridland@toynbee.hants.sch.uk</a>	02390 269026 ex 321
Naomi Lewis	Portsmouth & Staunton	<a href="mailto:Naomi.lewis@scsc.hants.sch.uk">Naomi.lewis@scsc.hants.sch.uk</a>	02392 473031	
<b>Oxfordshire</b>	Julie Garner	Senior Competition Manager	<a href="mailto:Julie.Garner@Oxfordshire.gov.uk">Julie.Garner@Oxfordshire.gov.uk</a>	07787 921650
	Simon West	North Oxon & West Oxon	<a href="mailto:Simon.west@oxfordshire.gov.uk">Simon.west@oxfordshire.gov.uk</a>	07787 934064
	Ash Rump	The Vale & Thame & Oxford	<a href="mailto:Ashley.rump@oxfordshire.gov.uk">Ashley.rump@oxfordshire.gov.uk</a>	07787 923112

## **British Schools Gymnastics Association**

### **The Constitution of the B.S.G.A**

The Association is affiliated to British Gymnastics Association and to the National Council for School Sports. The Aim of B.S.G.A is to advance the mental, moral and physical welfare and development of school pupils through the medium of gymnastics.

### **B.S.G.A Objectives**

- To promote and control Regional and National gymnastics competitions between school teams and regional teams.
- To organise courses within the regions for the promotion of squad gymnastics and to provide teacher/coach education.
- To provide opportunities, nationally, for the personal development of the individual gymnast and provide advances teacher/coach education.
  - Arrange and organise international matches between boys and girl's teams and suitable opponents.
  - To support the World School Games.

The British Schools Gymnastics Association (BSGA) organises a wide range of competitions throughout Britain for school aged children. Competitive opportunities are available in the following disciplines: -

- Trampoline
- Floor & Vault
- Acrobatics and Tumbling
- Carita House (Individual Floor, Vault, Team Floor)
  - Girls Apparatus (Women's Artistic)
  - Boys Apparatus (Men's Artistic)
    - Sports Aerobics
    - Rhythmic

For more information on BSGA please visit the School pages of the Gymnastics England website [www.gymnasticsengland.org](http://www.gymnasticsengland.org)

## **Southern Region British Schools Gymnastics Association**

<b>Position</b>	<b>Contact</b>	<b>Address</b>	<b>Phone</b>	<b>Email</b>
<b>Chair</b>	Mr John Underwood	Chalfont St. Peters Sch., Penn Rd., Chalfont St. Peter, Bucks SL9 9SS	01753 883982	
<b>Secretary</b>	Laura Timmins	Maltman's Green Sch., Gerrards Cross, Bucks, SL9 8RR	07909 696946	<a href="mailto:Ltimmins1@maltmansgreen.com">Ltimmins1@maltmansgreen.com</a>
<b>Treasurer</b>	Mrs. Fran Arnold	Henry Beaufort Sch., East Woodhay Rd., Harestock, Winchester, Hants, SO22 6JJ	07962 222998	<a href="mailto:Fran.Arnold@beaufort.hants.sch.uk">Fran.Arnold@beaufort.hants.sch.uk</a>

If you would like further information on any of the topics discussed within this document please contact:

- EGA Regional Administrator for the South Region Katie Irwin on Email: [katie.irwin@gymnasticsengland.org](mailto:katie.irwin@gymnasticsengland.org) or Tel: 07771 374037
- Regional Development Officer for the South Region Helen Bushell on Email: [Helen.bushell@gymnasticsengland.org](mailto:Helen.bushell@gymnasticsengland.org) or Tel: 07739 512182
- County Development Officer for Hampshire & IOW Hayley Buckman on Email: [Hayley.Buckman@gymnasticsengland.org](mailto:Hayley.Buckman@gymnasticsengland.org) or Tel: 07825 982099